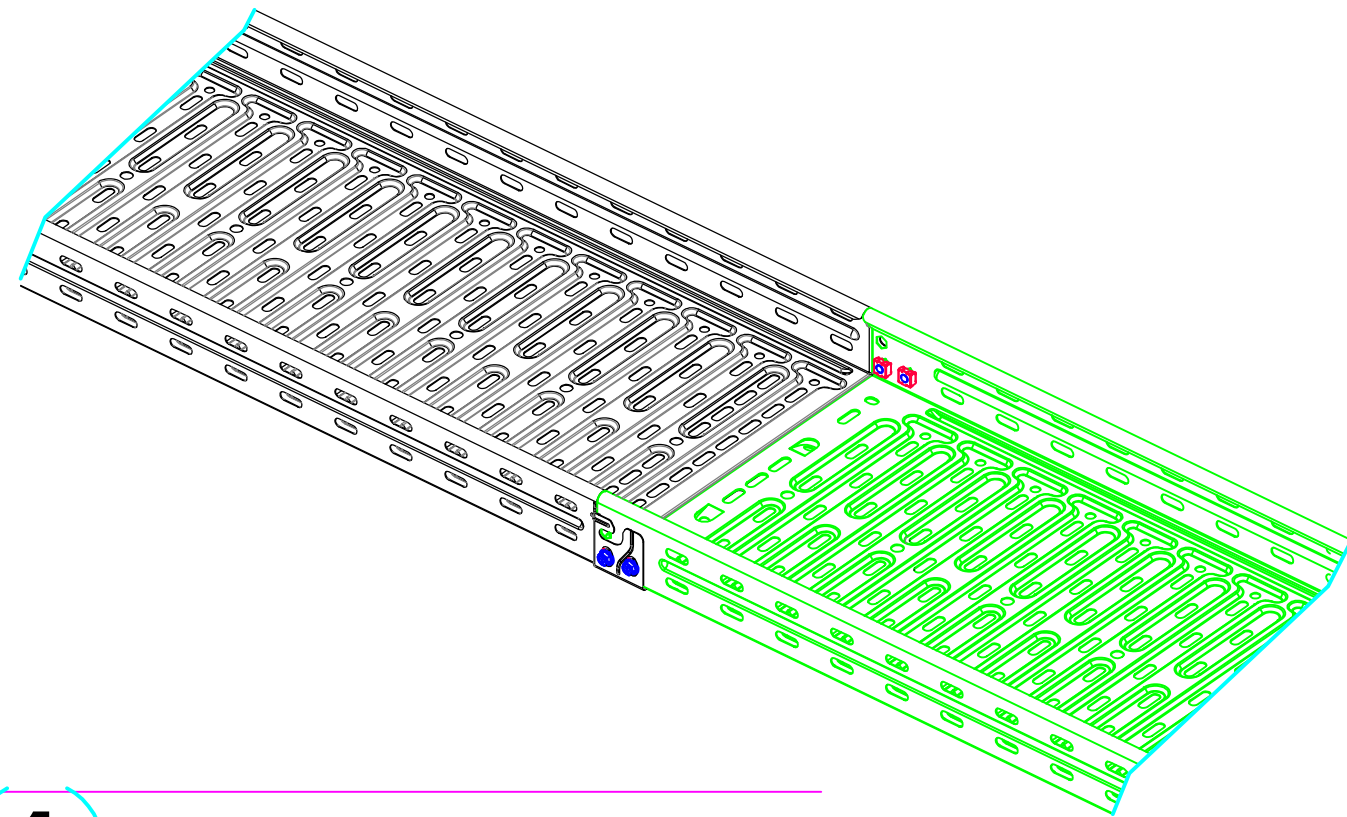
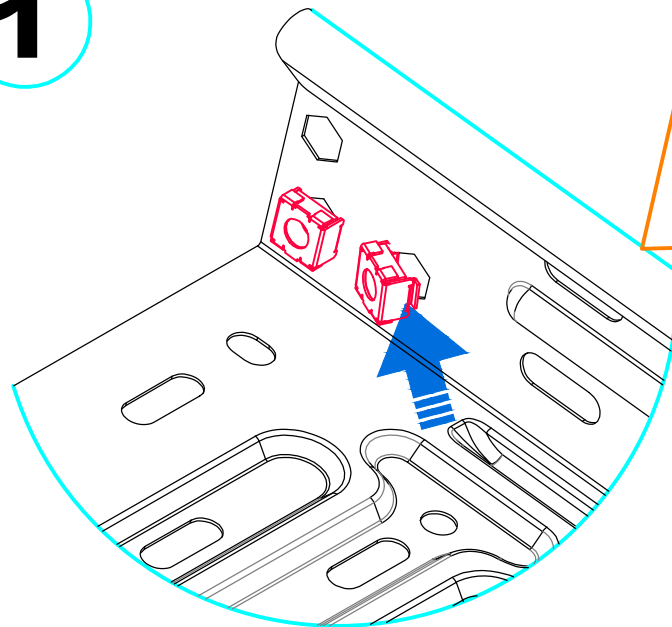


H60 INNOVATRAY CABLE TRAY INSTALLATION



1

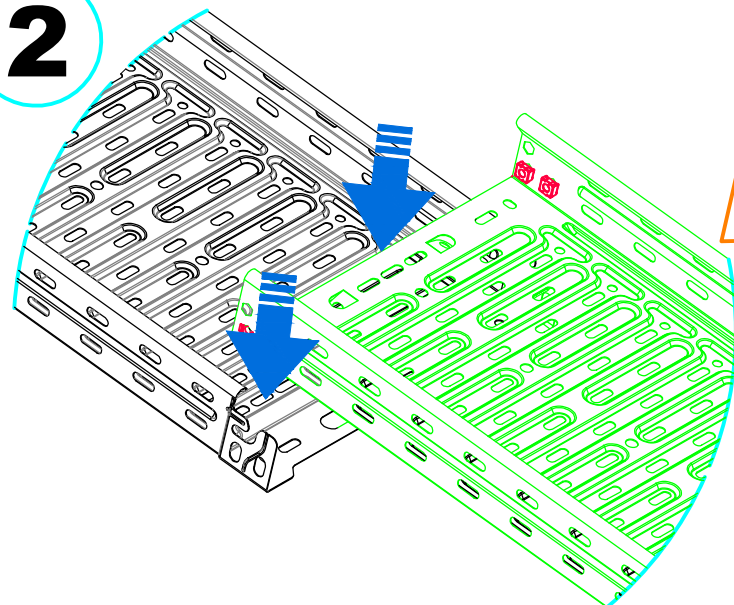


ASSEMBLY THE SPECIFIC MOUNT PIECE AS SHOWN IN FIGURE.



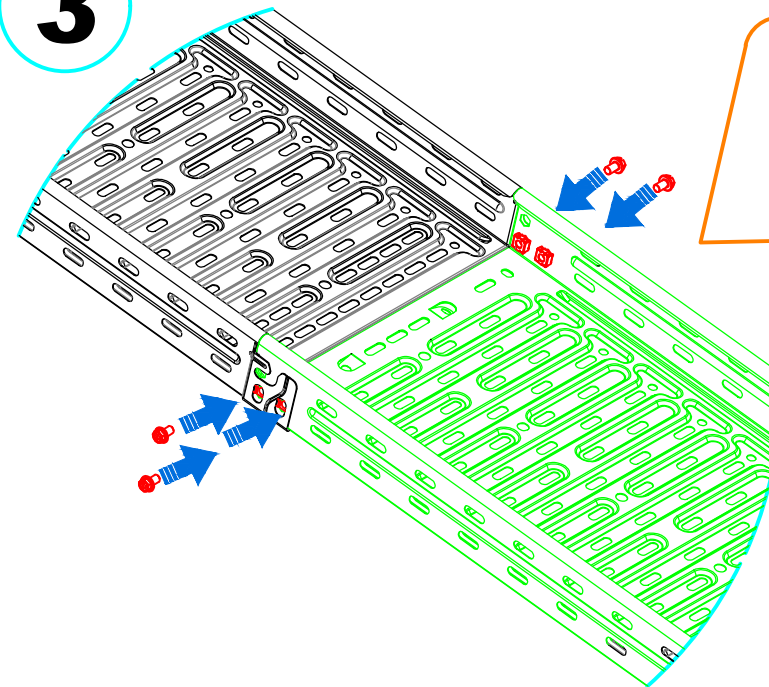
SPECIFIC MOUNT PIECE IS SPECIALLY PRODUCED FOR THE INNOVATRAY CABLE TRAY.

2



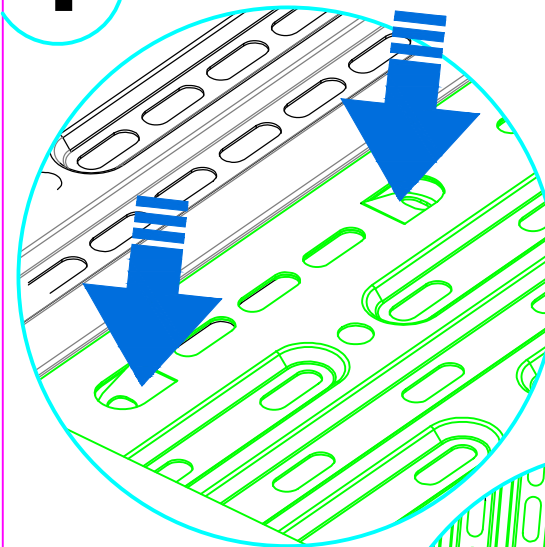
INNOVATRAY CABLE TRAYS ARE MOUNTED AS SHOWN IN FIGURE.

3

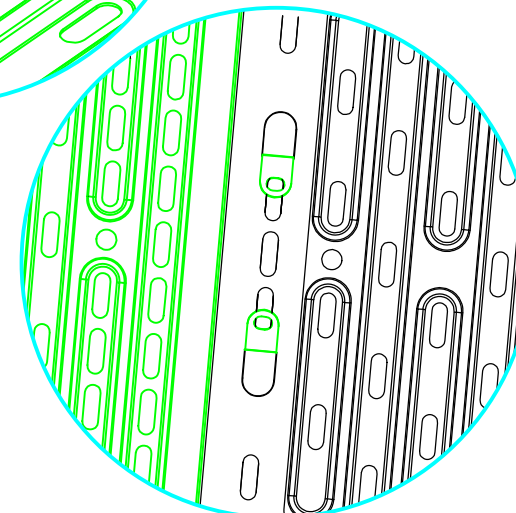


ASSEMBLY THE M6X12 FLANGE BOLTS AS SHOWN IN FIGURE.

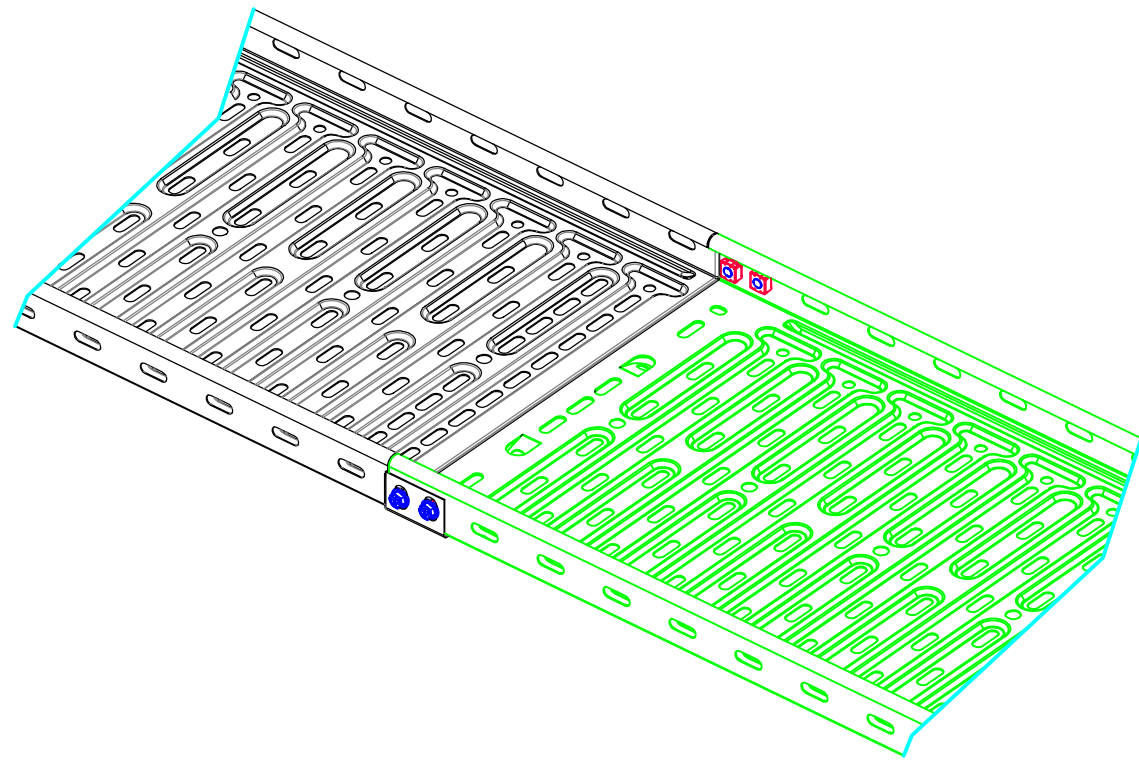
4



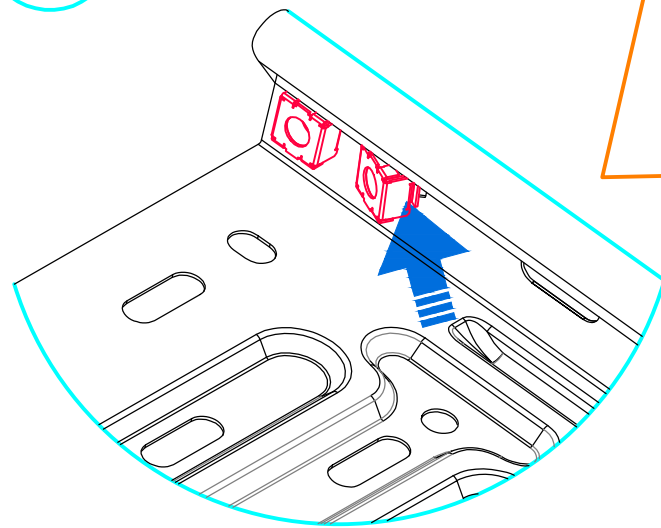
BEND THE LOOKING TAB AS SHOWN IN FIGURE .



H35 INNOVATRAY CABLE TRAY INSTALLATION



1

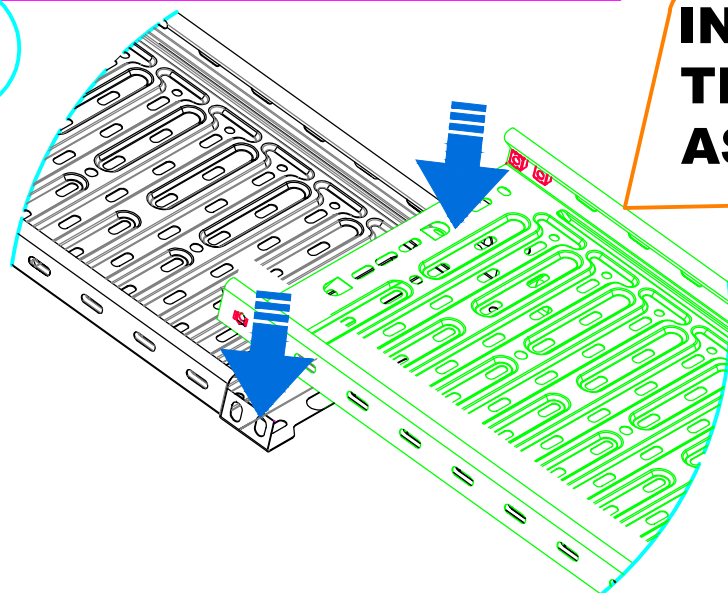


ASSEMBLY THE SPECIFIC MOUNT PIECE AS SHOWN IN FIGURE.



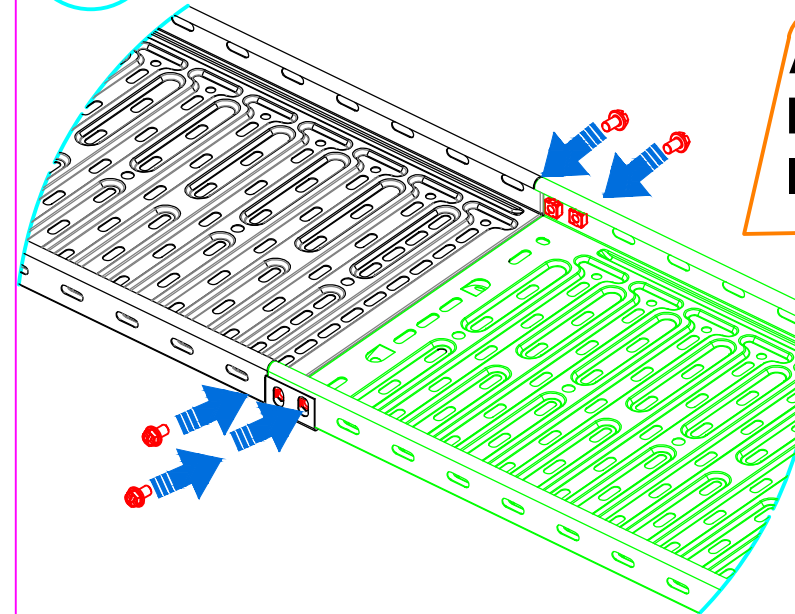
SPECIFIC MOUNT PIECE IS SPECIALLY PRODUCED FOR THE INNOVATRAY CABLE TRAY.

2



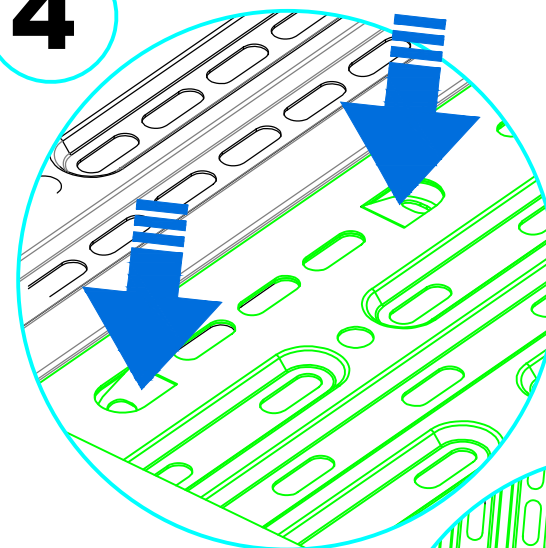
INNOVATRAY CABLE TRAYS ARE MOUNTED AS SHOWN IN FIGURE.

3

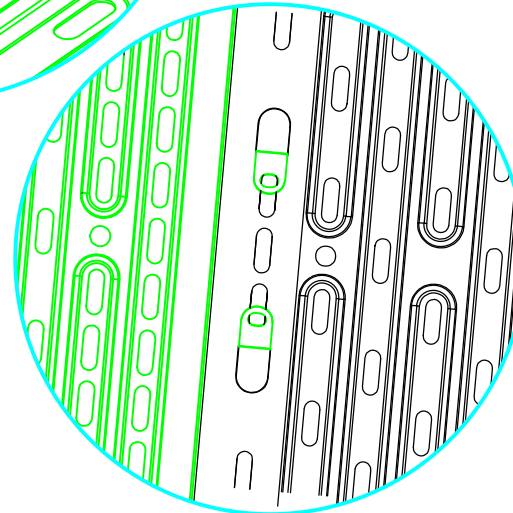


ASSEMBLY THE M6X12 FLANGE BOLTS AS SHOWN IN FIGURE.

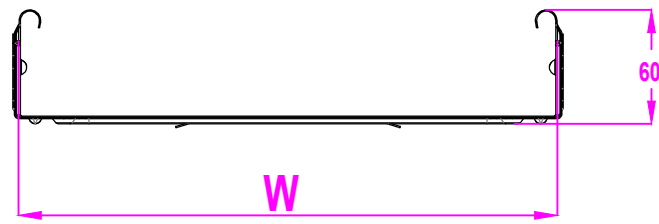
4



BEND THE LOOKING TAB AS SHOWN IN FIGURE .



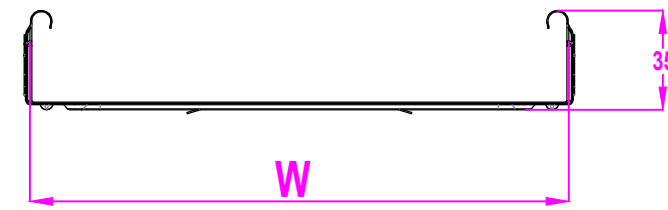
H60- H35 INNOVATRAY CABLE TRAY INSTALLATION



H60 INNOVATRAY CABLE TRAY

W	100
	150
	200
	300

TYPE	PIECES
M6X12 FLANGE BOLT	4
SPECIFIC MOUNT PIECE	4



H35 INNOVATRAY CABLE TRAY

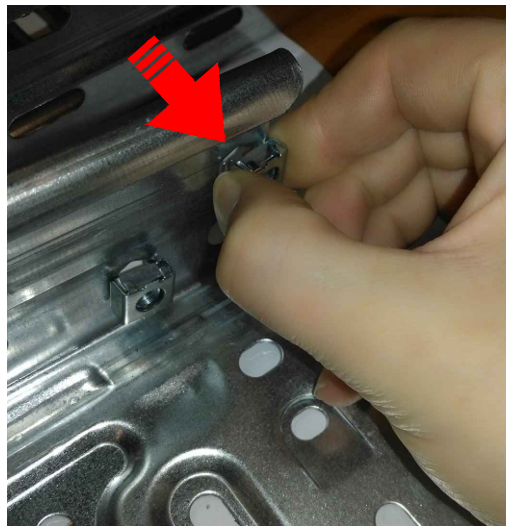
W	100
	150
	200
	300

TYPE	PIECES
M6X12 FLANGE BOLT	4
SPECIFIC MOUNT PIECE	4

H60- H35 INNOVATRAY CABLE TRAY INSTALLATION



1



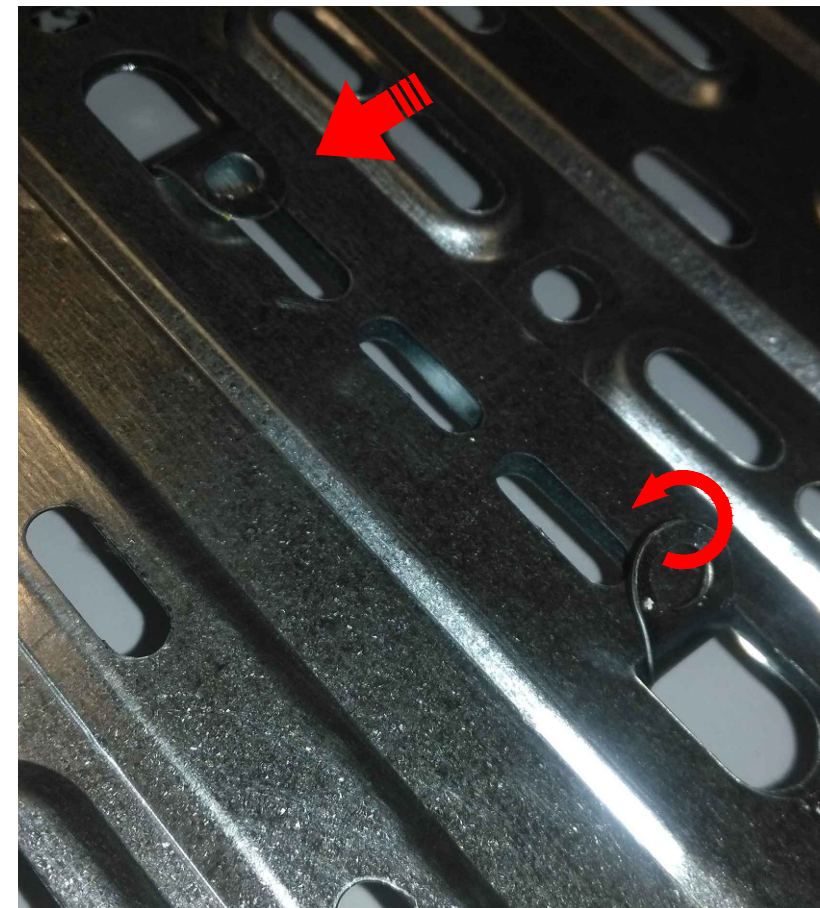
2



3

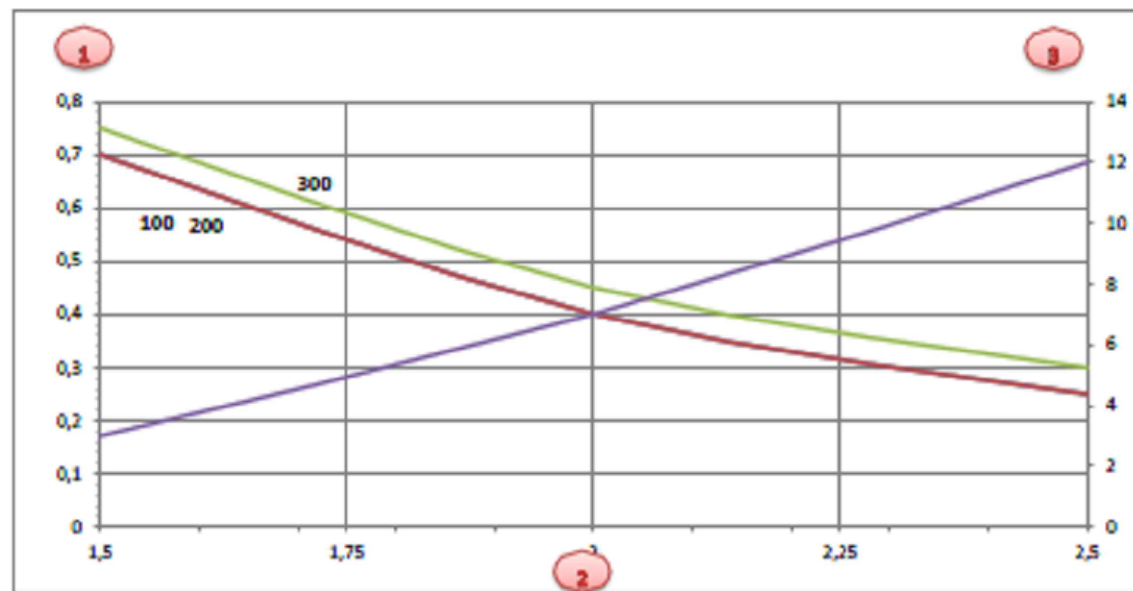
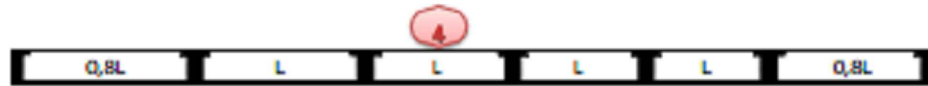


4



H60- H35 INNOVATRAY CABLE TRAY LOADING CAPACITY DETAILS

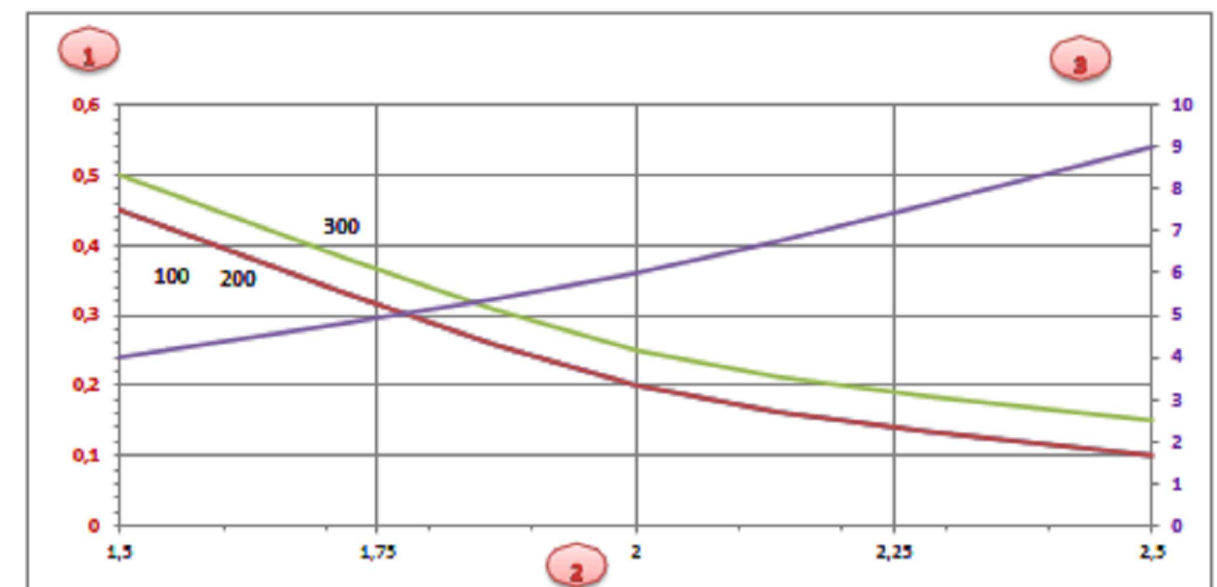
INNOVATRAY CABLE TRAY					
WIDTH (mm)	HEIGHT (mm)	THICKNESS (mm)	LOADING CAPACITY 1,5m kN/m	LOADING CAPACITY 2,0m kN/m	LOADING CAPACITY 2,5m kN/m
100	60	0,6	0,7	0,4	0,25
200	60	0,6	0,7	0,4	0,25
300	60	0,6	0,73	0,45	0,3



- 1) Permitted cable tray /ladder load in Kn/m without man load / zul Kabelninnen -/leiterbelastung in kN/m ohne Manlast
- 2) Support width in m/Stützweite in m
- 3) Deflection mm at permitted kN/m/Holmdurchblegung in mm bei zul.kN/m
- 4) Load scheme during testing/Belastungsschema beim Prüfverfahren

Load curve with cable tray/ladder width in mm/ Belastungskurve mit Kabelrinnen-leiterbreite in mm
Deflection curve according to support width/ Holmdurchbiegungskurve je nach Stützweite

INNOVATRAY CABLE TRAY					
WIDTH (mm)	HEIGHT (mm)	THICKNESS (mm)	LOADING CAPACITY 1,5m kN/m	LOADING CAPACITY 2,0m kN/m	LOADING CAPACITY 2,5m kN/m
100	35	0,6	0,45	0,2	0,1
200	35	0,6	0,45	0,2	0,1
300	35	0,6	0,5	0,25	0,15



- 1) Permitted cable tray /ladder load in Kn/m without man load / zul Kabelninnen -/leiterbelastung in kN/m ohne Manlast
- 2) Support width in m/Stützweite in m
- 3) Deflection mm at permitted kN/m/Holmdurchblegung in mm bei zul.kN/m
- 4) Load scheme during testing/Belastungsschema beim Prüfverfahren

Load curve with cable tray/ladder width in mm/ Belastungskurve mit Kabelrinnen-leiterbreite in mm
Deflection curve according to support width/ Holmdurchbiegungskurve je nach Stützweite